



Sam Fox School of Design and Visual Art Washington University
Visiting Profesor: Antonio Sanmartín
Other Advisorors: TbD
Teaching Assistants: Cesar Recarte
Time/Location: M-W-F 13,30 to 17,30
Ref.: 419 Rotation3/Home Studios W15(4-6-8Dec2017)

26...

25. Also:

Wednesday 6Dec2017: Print all boards on 11x17 to check previous to printing and confirm your progress towards full completion of all deliverables.

Friday 8Dec2017: Laser cat files for 1-32 model due, start building the model 1-32 and final checking of Final Review deliverables.

24.Tasks W15: Label (following the list on item 17 of this Syllabus), complete, edit and print all 24x24boards. Fix repair all models and drawings, including those with notes and comments. Photograph of all models.

23.Reading Advise: "Landscapes of Architectural Education". Juhani Palasma.
 Take it as an ThansGivin present.

22.Monday 27Nov2017:Pin up Review of 1"-4' Models

21.Happy Thangs Givings to all!!!

20. Task for W13:

Model 1"-4' or 1"-6' from sections. Built on the 2x4" pieces of wood. Departs form the laser cut on board agreed sections 1"-4' scale and includes full model of 2/3 units to be inserted/extracted. Also includes 1 or 2 real materials built in the model.

Cesar Rodarte will be assisting you in case of doubts during Thanks Givins Week.

19.Tasks W12 (13-15-17Nov2017)

Plans and Section including info from Tech Dossier. Print Draft Plan-Sections 1-4". Start Model 1"-4'

18. Agenda for 419 remaining F17 weeks

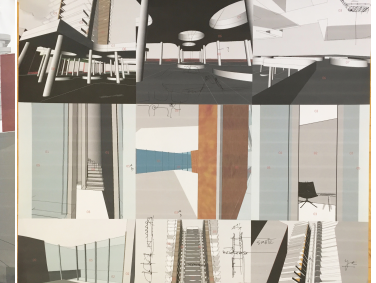
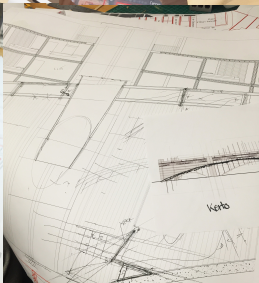
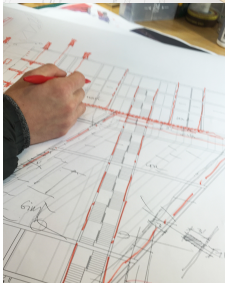
W12 (13-15-17Nov2017): Plans and Section including info from Tech Dossier. Print Draft Plan-Section 1"-4'

W13 (20-22-24Nov2017): Build Model 1-4 fragment of Proposal. **ASG in BCN**

W14 (27-29-01Dec2017): Plans and Sections 1-4. All in 24x24" boards

W15 (4-6-8Dec2017): Print all Boards 1/256 scale, 1/64 Scale, ...

W16 (11-13-14-15Dec2017): Site model 1-32", Dossier, Video,...Final Review



Sam Fox School of Design and Visual Art Washington University

Visiting Profesor: Antonio Sanmartín

Other Advisorors: TbD

Teaching Assistants: *Cesar Recarte*

Time/Location: M-W-F 13,30 to 17,30

Ref.: 419 Rotation3/Home Studios W15(4-6-8Dec2017)



17. **Draft of Final Review Deliverables**

- 01of19.8x11 dossier. Includes TECHNICAL DOSSIER includes reduction of all docs., Images of models, attempts/sketches/refs,...
- 02of19.Site Model 1-32, V3. Made in Museum board to be inserted on Group model
- 03of19.Model 1-4 of Fragment/Cluster of the Proposal. Built from Section and plan 1-4 scale
- 04of19.Plans 1-4 of Fragment/Cluster of the Proposal. Includes description of construction from Tech Dossier. 24"x24"boards.
- 05of19.Sections 1-4 of Fragment of the Proposal. Includes description of construction from Tech Dossier. 24"x24" boards.
- 06of19.2/3 Images for full description selected of the 9 images item 7of... 24x24"
- 07of19.9 images with surface numbers and A-B materials/systems options
- 08of19.BCN-Site description with proposal 1-256 scale, 24x24" board
- 09of19.BARCELONETA-site description with proposal 1-64 scale, 24x24" board
- 10of19.Proposal Ground Plan of 30+ Units, includes an section, scale 1"-32', 24x24" board
- 11of19.Proposal Typical Plan of 30+ Units, includes an section, scale 1"-32', 24x24" board
- 12of19.Type with Membrane/Entry space description, scale 1"-2', 24"x24" board.
- 13of19.Site plan of proposal (300 units aprox.and selected 30+ units, scale 1"-64'
- 14of19.Model version 2 of 30 units aprox. AGGREGATION scale 1"-32'. Any material/technique/...Includes "tokens/units/types" and description of Communal spaces.
- 15of19.Plan and Section of Model of 30 Units aprox. AGGREGATION Version 1. Includes description of all units, communal spaces, access, insertion on the site, public and entry spaces...
- 16of19. All 24x24" drawings reviewed before Fall Break and adjusted to fit inside the FRAME built for Rotation 2. Aggregation A.Insertion 1. Aggregation A Insertion 2. Aggregation B, Insertion 1. Aggregation B, Insertion 2.
- 17of19.Model of K drawing.
- 18of19. K drawing from "la mercé" Speeches, 24"x24".
- 19of19. TXT of "la mercé Speeches, 12"x24".

Group model built as described in syllabus item #11

XTRA. 30 seconds Video. Includes 2/3 still frames very defined 3D images



16. Task for W11

- _Ground Plan scale 1-32, 24"x24" board
- _Project Adjustments after Mid Term Review.
- _Type development, complete 06of12.Type with Membrane/Entry space description, scale 1"-2', 24"x24" board.
- _3D of Proposal.
- _Technical Dossier.

15. Task for 3Nov Post Mid Review

- _Start Ground Plan scale 1-32, 24"x24" board
- _Finish Group model
- _Trim all 24x24 boards
- _Complete 81/2x11 dossier.
- _A Mid Term orientative grade will be given one to one.

Sam Fox School of Design and Visual Art Washington University

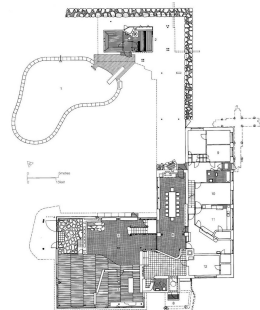
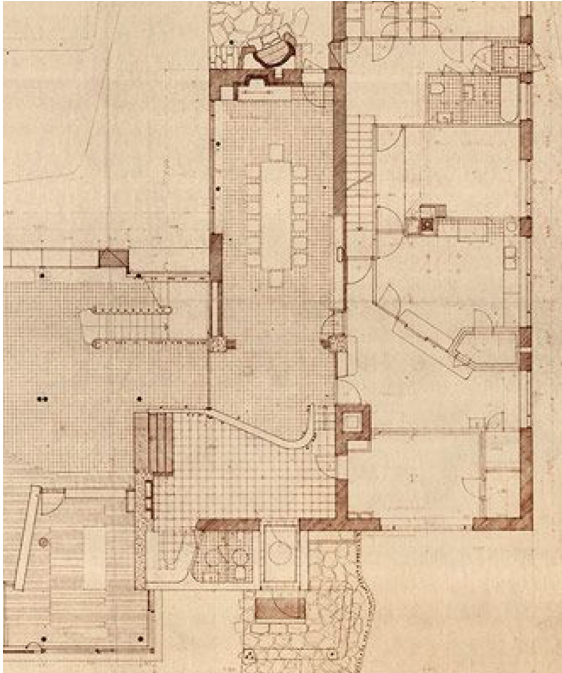
Visiting Profesor: Antonio Sanmartín

Other Advisorors: TbD

Teaching Assistants: Cesar Recarte

Time/Location: M-W-F 13,30 to 17,30

Ref.: 419 Rotation3/Home Studios W15(4-6-8Dec2017)



14.Wednesday 25Oct2017:desk crits of

05of13.Plan of 30+ Units, includes an section, scale 1"-32'

06of12.Type with Membrane/Entry space description, scale 1"-2', 24"x24" board.

13.Deliverables Mid Term Review.

See 419 booklet.

01of13.8x11 dossier with all docs.,_imgs. of models, attempts/sketches/refs,...

02of13.Cluster physical model 2-3 units 1"-4' scale, 24x24 board.

03of13.Cluster building section 2-3 units, 1"-4' scale, 24x24 board.

04of13.Cluster building plan 2-3 units, 1"-4' scale, 24x24 board.

05of13.Plan of 30+ Units, includes an section, scale 1"-32'

06of12.Type with Membrane/Entry space description, scale 1"-2', 24"x24" board.

07of13.Site plan of proposal (300 units aprox) and selected 30+ units, scale 1"-64'

08of13.Model version 2 of 30 units aprox. AGGREGATION scale 1"-32'. Any material/technique/...Includes "tokens/units/types" and description of Communal spaces.

09of13.Plan and Section of Model of 30 Units aprox. AGGREGATION Version 1. Includes description of all units, communal spaces, access, insertion on the site, public and entry spaces...

10of13.All 24x24" drawings reviewed before Fall Break and adjusted to fit inside the FRAME built for Rotation 2.

Aggregation A.Insertion 1.

Aggregation A Insertion 2.

Aggregation B, Insertion 1.

Aggregation B, Insertion 2.

11of13.Model of K drawing.

12of13. K drawing from "la mercé" Speeches, 24"x24".

13of13. TXT of "la mercé Speeches, 12"x24".

And group model built as described in syllabus item #11

12. Tasks for Monday 23Oct2017.

a.Model version 2 of 30 units aprox. AGGREGATION scale 1-32. Any material/technique/...Includes "tokens/units/types" and description of Communal spaces.

b.Plan and Section of Model of 30 Units aprox. AGGREGATION Version 2. Includes description of all units, communal spaces, access, insertion on the site, public and entry spaces...

c.All 24x24" drawings reviewed before Fall Break and adjusted to fit inside the FRAME built for Rotation 2.

Aggregation A.Insertion 1

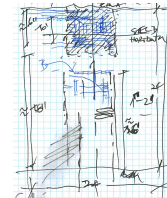
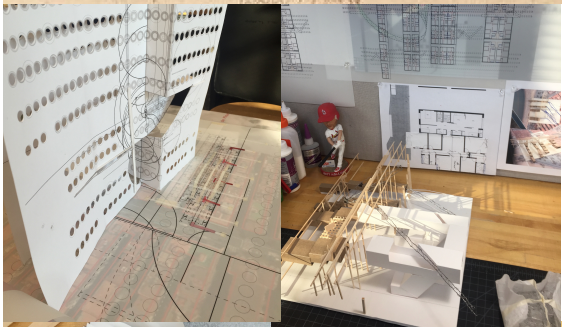
Aggregation A Insertion 2

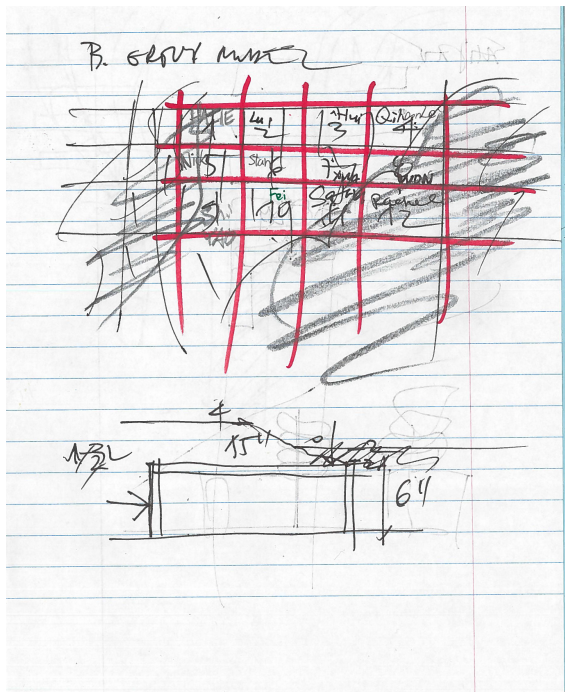
Aggregation B, Insertion 1

Aggregation B, Insertion 2

d.Model of K drawing

e.Dossier with all attempts/sketches/refs,...





Sam Fox School of Design and Visual Art Washington University
Visiting Profesor: Antonio Sanmartín
Other Advisorors: TbD
Teaching Assistants: Cesar Recarte
Time/Location: M-W-F 13,30 to 17,30
Ref.: 419 Rotation3/Home Studios W15(4-6-8Dec2017)

11. Group model. Follow directions given in class on Wednesday 11Oct2018. Cesar Rodarte will be available and helping you in the **construction of the model during Fall break.**

10. Task for Wednesday/Friday 11-13Oct2017. Model of aggregation Scale 1-32. Cardboard/wood/3D printed

09. Tasks for Monday 9Oct2017- IN STUDIO REVIEW

To be pinned up on every student working space:

1/6_Recollection/Dossier of all materials ordered from most recent to oldest.

2/6_Two Aggregations (AgrA and AgrB) and insertion drafts (50 to 150 units) in **Barceloneta** Scale 1-32. Printed Boards 24x24". Includes aggregation scaled according to Token units and based in the drawing and section of the model of K drawing and the Barceloneta map (photomap and hard red lines)

3/6_"Token" of two cases of Geometry of Living: own and assigned. Scale 1-32

4/6_DWG of model of K Drawing

5/6_Model of K drawing.

6/6_K drawing transcription from "PREGONES de la MERCE" (24x24") and 12x24" Text

08. Group model.

Scale 1-32

07. Tasks for W06: Geometries for living.

e_Two Aggregation draft and insertions (50 to 150 units) in **Barceloneta**. Printed Boards 24x24"

d_"Token" of two cases of Geometry of Living: own/proposed and assigned

c_DWG of model of K Drawing

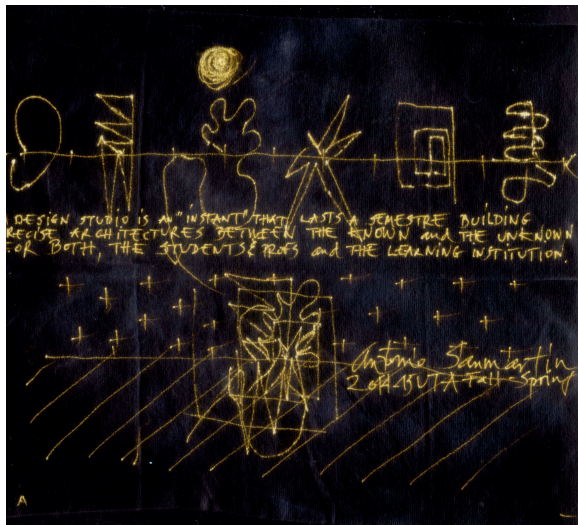
b_Model of K drawing.

a_K drawing transcription from PREGONES de la MERCE.

06. Student List.

	Phone Number	Name	e-m	W 1	W2	W3	W4	W5	W6	W7 MidR	W8	W9	W10	W11	W12	W13 FinalR	W14	X X
1		SATRIA DJAJASUDARMA	Satria.djasudarma@wustl.edu	1	1													
2		NICHOLAS GORI	gori@wustl.edu	1	1													
3		QIHAN LEI	leiqihan@wustl.edu	1	1													
4		FEI LI	feili@wustl.edu	1	1													
5		SHIYAO LI	li.shiyao@wustl.edu	1	1													
6		RACHEL MADRYGA	rachelmadryga@wustl.edu	1	1													
7		HALLIE MOSS	halie@wustl.edu	1	1													
8		XUN WANG	Wang.xu@wustl.edu	1	1													
9		DOOHO WON	doohowon@wustl.edu	1	1													
10		HUI YANG	huiyang@wustl.edu															
11		LU YU	Lu.yu@wustl.edu															
12		XIANGCHUAN KONG																

05. Exhibition of Rotation 1, 2 and K (cultural drawing) and 24x24" framed drawings. Givens Level 1 Corridor



(1) Diderot Encyclopedia by Ken Botnic

Sam Fox School of Design and Visual Art Washington University

Visiting Professor: Antonio Sanmartín

Other Advisors: TbD

Teaching Assistants: Cesar Recarte

Time/Location: M-W-F 13,30 to 17,30

Ref.: 419 Rotation3/Home Studios W15(4-6-8Dec2017)

04. Tasks for W01/02/03/04/05/: Transcriptions in ROTATION 1/ 2 and 3

03. When/How

(An instant that last a Fall: 13W Tasks, no REWORKING)

SCHEDULE OVERVIEW: See Booklet

2.Where.

See Booklet

1.Course Description

See Booklet

0. General Data

ARCH XXXX Graduate Design Studio

Section 1 MWF 2-6 PM

Room XXX

INSTRUCTORS Antonio Sanmartín

Office 209

Ph

E-mail : azcon@coac.net

Office hours MTWThF 9to13

OFFERED: Fall 2017

PREREQUISITES: Graduate Standing

Other links:

Fall Semester 2017

419 INTERNATIONAL Housing

Architecture is/as transcription